

AMTC @ TAPG Visitor Information

- Visitors must be always accompanied by their AMTC Host/Escort within the restricted/confidential AMTC building & garage areas.
- Weapons, alcohol, and non-prescription drugs are strictly prohibited from AMTC property.
- **NO PICTURES UNTIL APPROVED BY TAPG OPERATIONS.** All cameras and imaging devices must be approved by AMTC Operations/Security for use in TAPG building and track facilities.
- Any items removed from the site must have the proper authorization. Contact Operations/Security for assistance. 623-546-5416

TAPG Driver License:

- All test drivers must have a TAPG Middle Class Driver License to drive at AMTC.
- For Information and to Schedule your Middle-Class License. Email Driver Training or 1-623-764-5002
 - tdd@intertek.com

Badge Policy

- Visitors are always required to wear the VISITOR lanyard and badge given to them during check in at Track Control. Questions or Replacements: 1-623-546-5416

Food at AMTC

- AMTC has a Micro Mart that has microwave dinners, sandwiches, drinks, and snacks. It is recommended that you bring a lunch everyday during your visit. Refrigerators are available in the common area for your lunches.

Facility Wireless Network:

Toyota-Guest
or
Intertek Guest,
Password: Welcome123!

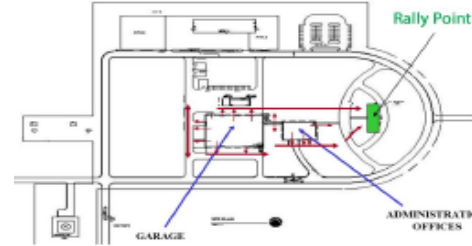
TAPG Visitor Access Form

Fill out Online Access Form and Submit.
<https://forms.office.com/r/fdLPkk3w0k>
forms.office.com

DON'T KNOW? Call 1-623-546-5416

Safety Is Our Top Priority!

- **All Accidents no matter how small must be reported to Track Control. 1-623-546-5416.**
- **Always Wear Seat Belts, carry a Safety Vest in vehicle, and never leave garage with out a Radio when entering test tracks!**
- **Evacuation Rally Point is VISITOR PARKING LOT.**
- **If you are on the track, Report to the Rally Point Immediately!**
- **RADIO EMERGENCY CHANNEL #1**



FACILITY and TRACK EMERGENCIES

- TAPG Security are certified firefighters and EMT/Paramedics.
- For medical emergencies contact TRACK CONTROL 1-623-546-5416

FIRE ALARM:

- If a FIRE Alarm is activated everyone must exit the building and report to the RALLY POINT, Visitor Parking.

Accident On the Track

- **Track Control will radio all track users to exit the test facility or come to a stop.**
- **Fire Engines and Ambulances have the right of way, and all traffic should move to the shoulder when emergency vehicles approach!**
- **Track Control will issue an all clear when testing can begin again or direct test traffic on what to do next. KEEP YOUR RADIO ON!**

AMTC @ TAPG Contact List:

TAPG Facility Announcements, Status Line: 1-623-546-5401
 TAPG Front Gate: 1-623-546-5304
 TAPG Track Control: 1-623-546-5416
 TAPG Operations :Manager: Mike Antic,1- 623-203-7868
 Driver Training Manager: Mark Mitchell, 1-623-764-5002
 On-Site Security Safety Manager: Rick Miller 1-623-203-2849
 On-Site Security Asst Manager: Dayleen Parker, 1-602-568-9426
 On-Site Garage Vehicle Manager: Bryan Smith, 1-480-501-9959
 Toyota Contact: Bob Ditner, 1-623-203-5984

ARIZONA MONSOON SEASON.

- June through September.
- Flooding can cause the facility to close.
- **NEVER CROSS A FLOODED ROADWAY!**
- **OBEY ALL SIGNS!**



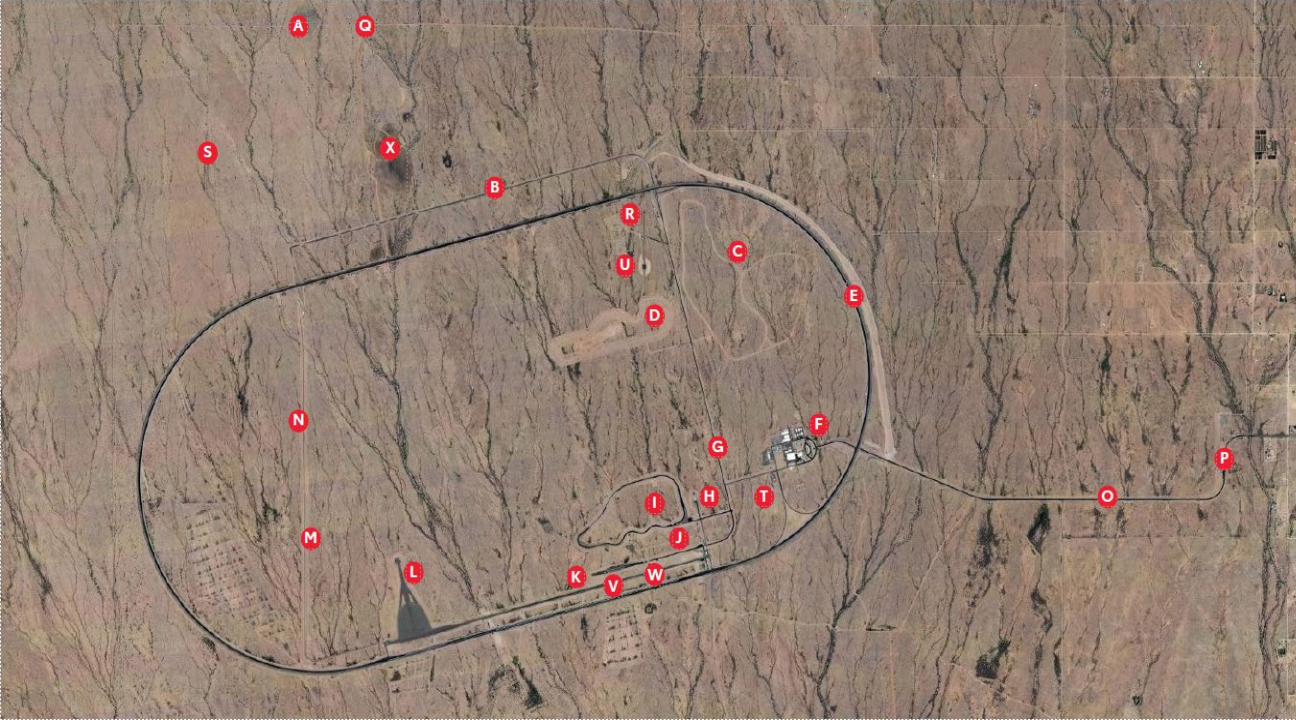
- Always contact **TAPG STATUS LINE** for latest announcements and closures.

ARIZONA SUMMER.

- **Temperatures can reach 120 F during the summer.**
- **HEAT STROKE and EXHAUSTION occurs when the body becomes overheated.**
 - Drink Plenty of Water and Fluids.
 - Wear loose fitting and light weight clothing.
 - Protect against the Sun and wear Sunscreen, Hats, and Sunglasses.

SIGNS OF	
HEAT EXHAUSTION	HEAT STROKE
DIZZINESS & FAINTING	THROBING HEADACHE
EXCESSIVE SWEATING	NO SWEATING
RAPID, WEAK PULSE	RAPID, STRONG PULSE
NAUSEA OR VOMITING	NAUSEA OR VOMITING
COOL, PALE CLAMMY SKIN	RED, HOT DRY SKIN
MUSCLE CRAMPS	MAY LOSE CONSCIOUSNESS

A stylized illustration of a person's torso. The left side is orange and shows a person sweating, while the right side is red and shows a person with a headache. A heart icon is in the center, and a lightning bolt is above the head.



A	4X4 Hill Climb	B	North Access Road
C	Rough Dirt Road	D	Dirt Track
E	10-Mile Oval	F	Office / Garage Campus
G	Access Road	H	Steep Grade
I	Ride & Handling	J	Loop Road B
K	Loop Road A	L	Vehicle Dynamic Area (VDA)
M	Stone Chipping Road	N	Pot Hole / Dust Intrusion
O	Main Access Road	P	Front Gate
Q	North Gate Road	R	Antenna Test Area
S	4x4 Trail	T	UIN / Structure Roads
U	Noise Pass By (ISO)	V	Off-Road Park West
W	Off-Road Park East	X	Indian Buttes Mountain

TAPG Office Map

1. Visitor Parking
2. Main Entrance
3. Security
4. Hoteling Seats
5. Garage
6. Car Wash
7. TDD Office
8. Fueling Station <NEW>



Directions: Phoenix Sky Harbor Airport to TAPG
 30700 W Patton Rd. Wittmann AZ. 85361
 623-546-5416

