

Counterfeit Intertek Certified Product Notification

Nano Cube USA LLC, ThermaAcousticCore Wall Series, Insulated Wall Panel System

Notification Type:	Counterfeiting
Certification Type:	WH Listed - US

Notification

Intertek notifies consumers, retailers and distributors of products in the marketplace that are bearing counterfeit Intertek Certification Marks as identified below.

Company Identification

Nano Cube USA LLC

Product Identification

Nano Cube USA LLC | ThermaAcousticCore Wall Series | Insulated Wall Panel System

Hazard Involved

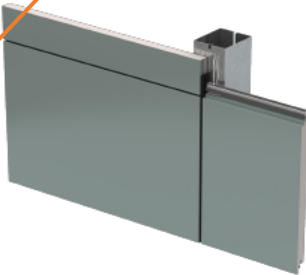
Not Intertek Certified

What To Do

Use should be immediately discontinued and return to the point of purchase. Distributors and retailers should discontinue sales and return inventories to their suppliers.

Photos and Images / Photos et images

IVCore® Data Sheet
Insulated Wall Panel System



Product Specification	
Insulation Core: ThermoAcousticCore® Technology	
Profile:	Exterior: Flat Interior: Shadowline or flat
Embossing:	Exterior: Stucco or non-embossed Interior: Stucco or non-embossed
Gauge:	Exterior: 22 ga Interior: 26, 24, 22 ga
Width:	40"
Thickness:	3"
Length:	Embossed: 8' - 32' Non-embossed: 8' - 20'
Reveal option:	1/8", 3/8", 1", 2"
Orientation:	Vertical or horizontal
Post fabrication (optional):	Trimless ends, folded corners, transverse bends (Manufacturing limitations apply. Please contact us for detailed information)
R-value:	± 8 per inch per ASTM C518 @ 75°F mean temperature ± 7 per inch per ASTM C518 @ 35°F mean temperature



IVCore® Data Sheet
Insulated Wall Panel System

Performance Testing and Approvals		
ICI USA insulated panels featuring ThermoAcousticCore® Technology meet specific building envelope performance criteria and requirements stipulated by US and Canadian building codes.		
Test	Procedure	Results
Fire	FM 4880	Passed: Class 1 Fire Rating of Building Panels or Interior Finish Materials*
	FM 4882	Passed: Smoke Sensitive Occupancies Interior and Exterior Use*
	ASTM E84	Flame Spread: 25 or Less / Smoke Developed: 90 or Less
	CAN/ULC-S101	Fire Endurance Tests: 10 min (Fastener conditions vary depending on product thickness.)
	CAN/ULC-S102	Flame Spread: 20, Smoke Developed: 45 for panel insulation core
	CAN/ULC-S138	Passed: Fire growth of foamed plastic insulated building panels in a full scale room configuration
	CAN/ULC-S134	Passed: Standard method of test for fire of exterior wall assemblies
	NFPA 259	Tested for potential heat of building materials
Structural	NFPA 285	Passed: Standard Fire Test Method for Evaluation of Fire Propagation Characteristics of Exterior Non-Load-Bearing Wall Assemblies Containing Combustible Components
	FM 4881	Passed.
Thermal Transmission	ASTM E72	Vacuum chamber tested. Panel load /span and deflection tables are available
	ASTM C518	Thermal Performance at 35°F mean temperature Thickness R-Value 3 27
		Thermal Performance at 75°F mean temperature Thickness R-Value 3 24
Air Infiltration	ASTM E283	0.003 CFM/ft² of Panel Area at 6.24 psf
Water	ASTM E331	No uncontrolled water penetration at 20 psf differential pressure
	AAMA 501.1	Dynamic water pressure testing - no sign of water leakage at 15 psf
Bond Strength	ASTM D1623	Sample tested for tensile bond strength of metal to foam
Skin Delamination		Sample placed in an autoclave device and pressurized to 2 PSI at 218°F for 2 1/2 hours
Regional Approvals	City of LA (LADBS)	CCRR 1074; FB 3080
	FL Product Approval	FL 46087.2
	Miami-Dade Listing	NOA 23-1024.07
	SFM 12-7A-1 (Brashfire)	Intertek Spec ID: 58965
	TX Dept of Insurance	EC-127